

Who, where and when?

Who?

One of the following four people has committed a crime. The criminal made 4 errors, the victim has made 0 errors and two suspects have made 1, 2 or 3 errors.



The ICT teacher said

- The modal class of B is $160 < h \leq 170$

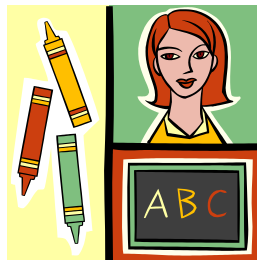
- The median of E is $18000 < S \leq 20000$
- The median of D is $4 < h \leq 6$
- The median of B is $140 < h \leq 150$

The music teacher said:



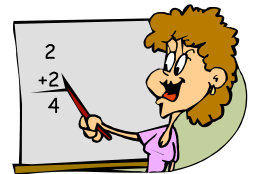
- The modal class and median of A is $20 < t \leq 30$
- The modal class of F is $150 < h \leq 160$
- The median of E is $14000 < S \leq 16000$
- The modal class of B is $150 < h \leq 160$

The English teacher said:



- The modal class and median of D are the same
- The median of F is $150 < h \leq 160$
- The median of C is 37 to 39
- The median of E is $18000 < S \leq 20000$

The Maths teacher said:



- The modal class and median of B are the same
- The median of F is $140 < h \leq 150$
- The modal class and median of C are NOT the same
- The modal class of E is $50000 < S \leq 100000$

Now you need to work out where and when the crime was committed....

Where?

The murder was committed at one of the locations below, but which one?
It happened where ALL the answers are true.

The maths classroom	The total number of girls is 30. The total number of people in Table A is 40. The total number of trainers is 4.
The dining hall	The total number of boys is 100. The total hours using a PS3 is 720. The total boys' height is 14,900cm.
The gym	The total time to get to work is 1130 hours. The total number of boys is 100. The total salaries are £1,565,000.
The playing fields	The total girls' height is 4430cm. The total in table C is 20. The total number of salaries is 7.

When?

Find the day where all the **estimates of the means** are correct:

Monday	If table A is 28.25 and table C is 38 (to 1 significant figure) and table E is £17,388.89 (to 2 decimal places)
Tuesday	If table B is 147.7 (to 1 decimal place) and table C is 40 (to 1 significant figure) and table D is 6.1 (to 1 significant figure)
Wednesday	If table A is 28.3 (to 1 decimal place) and table F is 200 (to 1 significant figure) and table D is 6.1 (to 1 decimal place)
Thursday	If table C is 38.15, and table F is 100 (to 1 significant figure) and table B is 147.7 (to 1 decimal place)
Friday	If table F is 149 and table D is 6.1 (to 1 decimal place) and table B is 150 (to 1 significant figure)

The Accusation

Who	
Where	
When	